

## Primary & Intermediate Topics & Curriculum links

All of our Journeys of Discovery are linked to the **new curriculum**, involve **unique learning experiences to fit your unit of learning** and can be **pitched to students from year 1 - 8**.

### Journey of Discovery: Caring for Animals (The Nest)

Come visit our animal hospital and discover how we care for our animals at Wellington Zoo. You will also learn about how you can better care for your pets at home.

#### Years 1 - 8 · Curriculum Links:-

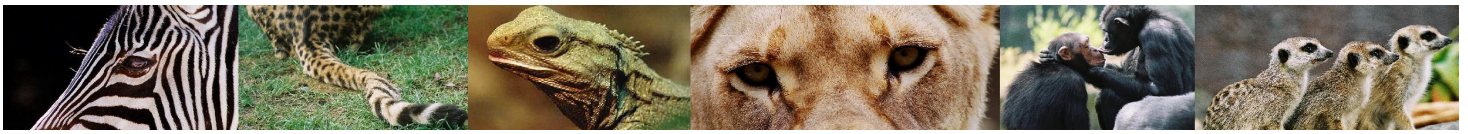
<i>Values</i>	Innovation, inquiry and curiosity; Community and Participation; Integrity; Respect
<i>Key Competencies</i>	Thinking; Using Language, symbols and texts; Managing Self; Relating to others; Participating and Contributing.
<i>Key Learning Area</i>	Science
<i>AO's &amp; Levels</i>	Living World · Life Processes Levels 1-2
<i>Other Learning Areas</i>	Social Science · English · Technology · Health & PE

### Journey of Discovery: Where Do I Belong?

Put on your scientist hat and discover the many ways animals can be grouped. An opportunity for students to encounter our Zoo animals and unique setting before classifying the living world.

#### Years 1 - 8 · Curriculum Links:-

<i>Values</i>	Innovation, inquiry and curiosity; Community and Participation; Integrity; Respect
<i>Key Competencies</i>	Thinking; Using Language, symbols and texts; Managing Self; Relating to others; Participating and Contributing.
<i>Key Learning Area</i>	Science
<i>AO's &amp; Levels</i>	Living World · Evolution Levels 1 - 4
<i>Other Learning Areas</i>	Social Sciences · English · Technology · the arts · Health & PE · Mathematics



## Primary & Intermediate Topics & Curriculum links

### Journey of Discovery: Designer Animals

Investigate how a range of animals are adapted to their habitats. Answer the question – is it alive? Then investigate how various life processes are carried out within the animal kingdom.

#### Years 1 - 8 · Curriculum Links:-

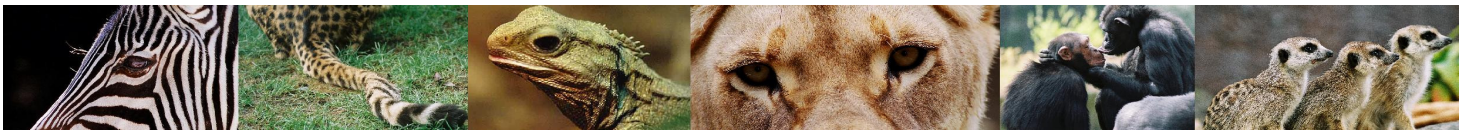
<i>Values</i>	Innovation, inquiry and curiosity; Community and Participation; Integrity; Respect
<i>Key Competencies</i>	Thinking; Using Language, symbols and texts; Managing Self; Relating to others; Participating and Contributing.
<i>Key Learning Area</i>	Science
<i>AO's &amp; Levels</i>	Living World · Ecology Levels 1 - 4 · Evolution Levels 3 - 4 · Life Processes Levels 1 - 4
<i>Other Learning Areas</i>	Social Sciences · English · Technology · the arts · Health & PE · Maths

### Journey of Discovery: Born Free?

Are Zoos the best places for animals? Understand how animals are cared for in captivity and how zoos help endangered species.

#### Years 1 - 8 · Curriculum Links:-

<i>Values</i>	Innovation, inquiry and curiosity; Community and Participation; Integrity; Respect
<i>Key Competencies</i>	Thinking; Using Language, symbols and texts; Managing Self; Relating to others; Participating and Contributing.
<i>Key Learning Areas</i>	Science, Social Science, Technology
<i>AO's &amp; Levels</i>	Science · <i>Living World</i> · Life Processes Levels 1 - 2 Social Science · Levels 2 - 4 Technology · Technological Practice, Knowledge, Nature of Technology · Levels 1 - 4
<i>Other Learning Areas</i>	English · the arts · Health & PE · Mathematics



## Primary & Intermediate Topics & Curriculum links

### Journey of Discovery: Earth Story

What impact do humans have on the other inhabitants of planet earth and how can we ensure these amazing living things are here to meet our grandchildren?

#### Years 1 - 8 · Curriculum Links:-

<i>Values</i>	Innovation, inquiry and curiosity; Community and Participation; Integrity; Respect
<i>Key Competencies</i>	Thinking; Using Language, symbols and texts; Managing Self; Relating to others; Participating and Contributing.
<i>Key Learning Areas</i>	Science, Social Science, Technology
<i>AO's &amp; Levels</i>	Science · <i>Living World</i> · Evolution Levels 1 - 4 · Ecology Levels 3 - 4 Planet Earth & Beyond · Interacting Systems Levels 1 & 2 Social Science · Levels 1 - 4 Technology · Technological Practice, Knowledge, Nature of Technology Level1-4
<i>Other Learning Areas</i>	English · the arts · Health & PE · Mathematics

### Journey of Discovery: Unique New Zealand

Uncover the world of wildlife in Aotearoa – past and present. Discover what makes our flora and fauna so special.

#### Years 1 - 8 · Curriculum Links:-

<i>Values</i>	Innovation, inquiry and curiosity; Community and Participation; Integrity; Respect
<i>Key Competencies</i>	Thinking; Using Language, symbols and texts; Managing Self; Relating to others; Participating and Contributing.
<i>Key Learning Areas</i>	Science, Social Science, Technology
<i>AO's &amp; Levels</i>	Science · <i>Living World</i> · Ecology Levels 1 - 4 · Evolution Levels 3 - 4 Planet Earth & Beyond · Interacting Systems Levels 1 & 2 Social Science · Levels 1 - 4
<i>Other Learning Areas</i>	Technology · English · the arts · Health & PE · Mathematics