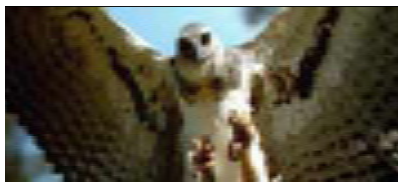


Ngā Take i Ngaro Ai

Ki ngā mokowā i raro nei, homai ngā take mō te ngarohanga o ēnei kararehe nō Aotearoa:



Moa

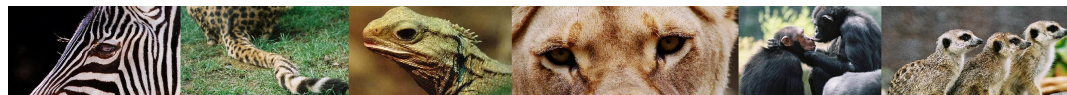


Haast Eagle



Huia

Stephen's Island Wren



Ngā Rangahau mō ngā Momo Tatawharengaro

Rangahautia tētahi momo kararehe e tata ngaro ana

Rangahautia tētahi kararehe tata wharengaro. Waihanga pānui kōrero pūmau, tuhia rānei he tuhinga whakamārama. He aha e tata wharengaro ai tō kararehe? He aha ngā mahi hei āwhina atu? He aha ngā mahi ka taea e tātou?

Kei raro nei tētahi tauira hei āwhina i a koe:

He aha te raruraru?

Kua tata patua kia ngaro ngā taika o Sumatran. He itiiti noa iho e toe ana i te koraha...



Tata ngaro: ngā Taika o Sumatran

Ingoa || Taika o Sumatran

Ingoa Pūtaiao || Panthera Tigris sumatrae

Tūnga Whakauka || Tino tatawharengaro

Nohonga || Te motu Initonīhia o Sumatra.

He aha ngā mahi āwhina?

He maha ngā rōpū e mahi ana ki te tiaki i ēnei kararehe ātaahua.. Hei tauira...

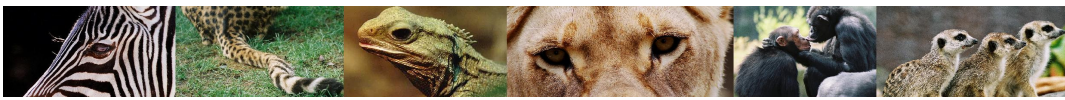
Whakahaerenga Whakawhānau ki te Rohe Kararehe Nui

Whakaora Ngeru

...

Me pēhea mātou e āwhina ai?

...



He Pūrākau Angitū mō te Golden Lion Tamarin



- ⇒ Ko Parīhi te wāhi anake i te ao ka kitea ngā Golden Lion Tamarins, (GLTs), i te koraha.
- ⇒ Iti iho i te 5% o te kāinga ngahere o ngā GLT' e toe ana, nā te maha o ngā rākau kua tapahia. Kāore e nui te ngahere hei nohonga mā rātou.
- ⇒ Ka [whakawhānau](#) GLT ngā rohe kararehe. Nā te angitū, i te tekau tau 1980's ka maha ake ngā GLT ki ngā Rohe kararehe, tērā i te koraha.
- ⇒ I te tau 1990, ka whakangungu a Jersey Zoo i Ingarangi i ō rātou GLT kia taea te hoki ki te koraha noho ai. I Parīhi, e ngana ana ngā tāngata ki te kawē i ngā GLT [noho-roto-rohe-kararehe](#) ki ngā ngahere pāpango. Ka ako ngā tāngata mō ngā GLT, ō rātou nohonga, ā, me te tiaki i a rātou mō ngā rā kei te heke mai.

Mō ētahi atu kōrero e pā ana ki ngā mahi āwhina i te Golden Lion Tamarin, haere ki: <http://www.durrellwildlife.org>

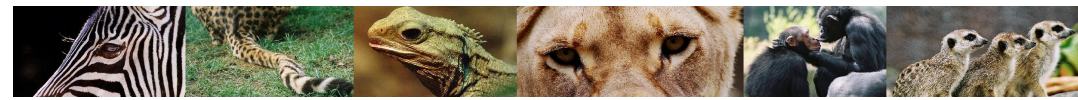
Me Aha Koe? Mā tō rourou ka oti te mahi!

- ⇒ Kohi pūtea mō ngā rōpū e āwhina ana i ngā kararehe tata wharengaro pēnei i te **WWF**. Ko ētahi mahi kohi pūtea he rā Taiao ki tō kura, te horoi motukā, he pō kai huawhenua rānei. Mō ētahi atu whakaaro haere ki www.wwf.org, T-mērā rānei ki info@wwf.org.nz
- ⇒ Whakaako i tō whānau me ō hoa. Waihanga pānui mō tētahi kararehe tata wharengaro, tētahi rānei o ōna raruraru.
- ⇒ Mahitahi me tō akomanga ki te whakatipu rākau i tō kura.
- ⇒ Hangarua kirihou, whakamahi pepa anō kia kore ai e moumouo rākau, Me te whakaaro mō ō kai me ngā pānga ki ngā kararehe. Me he tīmata ki ō mātou ake tāone, ka taea te tīni i te ao!

WELLINGTON



www.wellingtonzoo.com



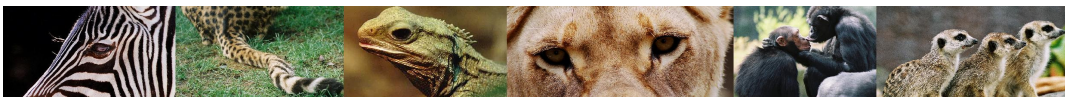
Kararehe tata wharengaro



WELLINGTON



www.wellingtonzoo.com

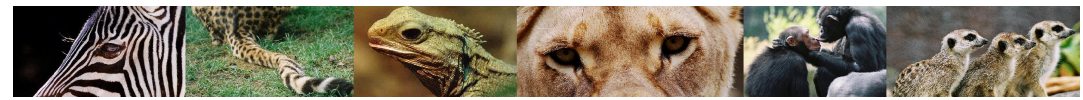


Pūrongo Kararehe Tata Wharengaro

5. Mātaki i tō kararehe mō te 5 meneti. I te mokowā i raro nei, tāngia ētahi o ngā takatūnga ka āwhina i tō momo kia ora i te koraha. Whakamāramahia te ara e tiaki ai ēnei i tō kararehe.

6. Inā huri ai ngā tohu huarere i te koraha, ka raru te kararehe i ōna āhukatanga, kia tata ngaro rātou. Hei taurira, kāore te Kiwi e rere, nō reira kāore e taea te rere i ngā kararehe patu i a rātou.

He āhukatanga kei tō momo kararehe ka raru i a ia i te koraha?



Ngā kararehe ngaro

1. Tautuhia ngā kupu e hāngai ana ki ngā whakamārama i raro nei:

He uaua te kite i tētahi momo kararehe engari ehara i te tata wharengaro _____

Kāore tētahi o te momo i te toe _____

Ki te kore e āwhinatia ka ngaro tētahi momo kararehe i ngā tau 10-20 _____

2. Rangahau Kararehe Ngaro o Aotearoa:

Ko te manu rere nui rawa i Aotearoa ko te _____

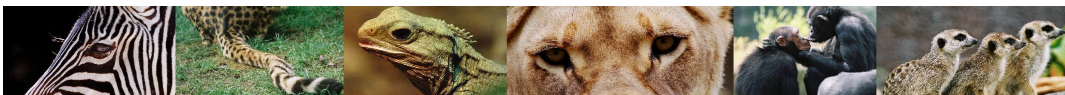
Ki ō whakaaro, he aha ōna kai? Homai kia 2 ngā whakaaro: _____

3. E hia ngā momo o te Moa? Porohitatia te whakautu tika rawa.

Ko te mea nui rawa neke atu i te $1 \frac{11}{7}$ m te teitei. I te nuinga o te wā ka noho ki te _____.

4. Neke atu i te 26 miriona tau ki muri ka noho tēnei ika o Aotearoa kua ngaro, ā, neke atu i te 9 mita tōna teitei. He _____

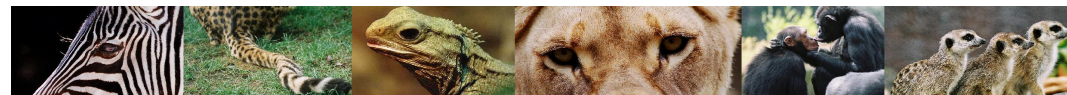




Momo mōrearea ki Wellington Zoo

Whakaotia te ripanga e whai ake nei mā ngā kōrero i te rohe kararehe me ngā kaimahi.

Ingoa o te momo	Ngā take e mōrearea ana	Me aha hei tiaki i te momo?



Pūrongo Kararehe Tata Wharengaro

1. Kōwhiria tētahi kararehe kua ki te koe i Wellington Zoo. Tuhia te ingoa o te momo i raro nei:

2. Wero: Kimihia tētahi kaimātai kararehe ka pātai mō te momo i kōwhiria e koe, ā, me te take kua tata wharengaro. Hopukina ō whakautu.

3. Whakarārangihia ngā take kua tata wharengaro tō kararehe, mai i te mea whakahirahira rawa.

4. Whakarāangi i te take kei runga tō take tuatahi.

